

**FINISHED SIZE:
APPROXIMATELY
56" X 90"**

FABRIC:

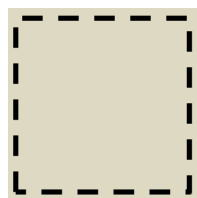
- **1 Layer Cake (40 Pre-cut 10" squares)**
- **(40) 10" squares background**

Disappearing Hour Glass

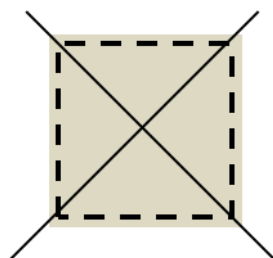
Pair layer cake squares with background squares, right sides together.



Stitch around all sides 1/4 inch from the edge.



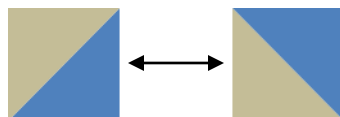
Cut the stitched squares on the diagonal to create (4) half-square triangles.



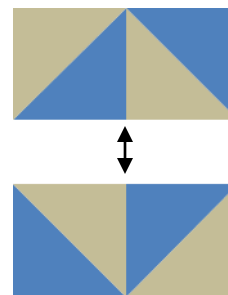
Press toward the dark fabric being careful no to distort the squares, as all the edges are bias.



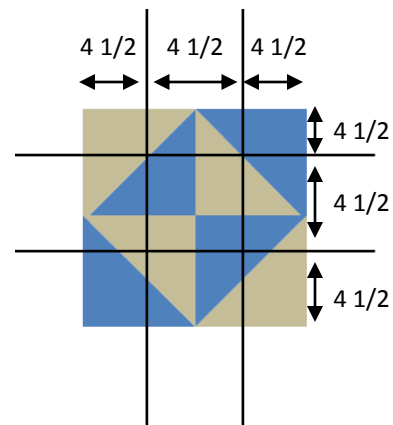
Sew half square triangles into rectangles as shown:



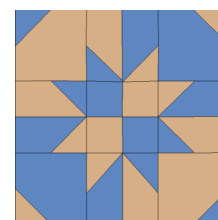
Sew the rectangles into squares as shown:



Cut the squares into (9) 4 1/2" squares pieces by cutting as indicated on the diagram below.



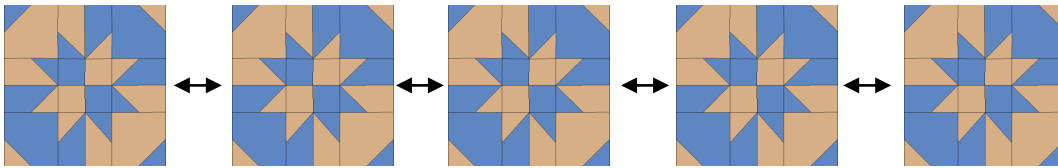
Reposition the pieces (and interchange with other squares, if desired) to construct this block.



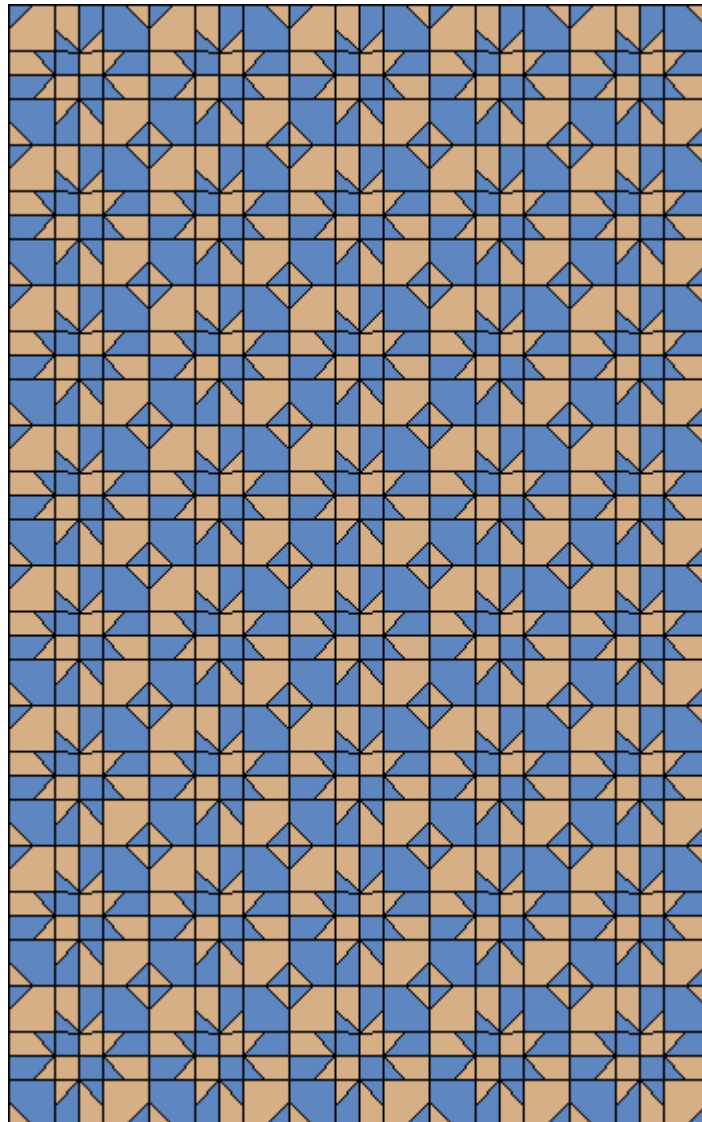
NOTE: This is one of many blocks that can be constructed with the disappearing hour glass, play around with your (9) squares, you may find a design you like better.

Disappearing Hour Glass (continued)

Sew blocks together in strips of (5) blocks each.



Sew strips together to make a quilt that looks like this:



Border, layer, quilt and bind as desired.

