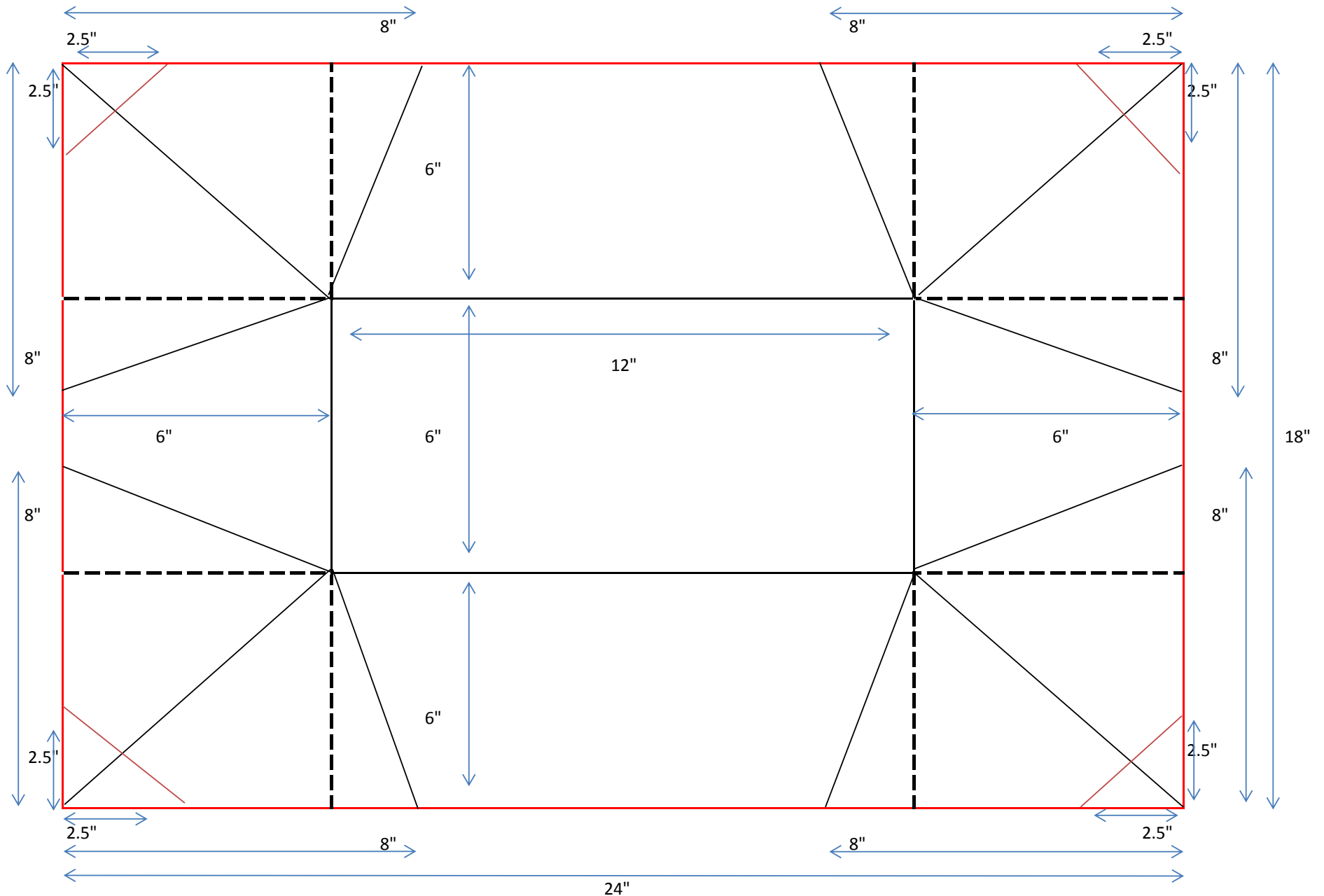


Ironing Pad and Tote © 2015 Lisa Book Berentsen for Quilter's Thread



(Note: Pattern is not perfectly drawn to scale)

DOTTED LINE IS FOR REFERENCE ONLY. (STITCHED LINES INTERSECT 6" FROM EACH SIDE.)

RED LINES ARE CUTTING LINES.

BLUE LINES ARE MEASUREMENT LINES.

SOLID BLACK LINES ARE STITCHING LINES.